

**UNITED**  
TOGETHER  
we are  
**STRONG**

UNITED Way OF WELD COUNTY | 2010-11 ANNUAL REPORT



THE PRODUCTION AND PRINTING OF THIS ANNUAL REPORT WAS  
MADE POSSIBLE BY THE GENEROSITY OF THE UNITED WAY  
OF WELD COUNTY 2011-12 CORNERSTONE PARTNERS

Monfort Family Foundation  
NCCM, Inc  
State Farm Insurance Companies  
The Greeley Tribune

Xcel Energy  
Flood and Peterson  
KUNC Community Radio for Northern Colorado  
Phelps-Tointon, Inc  
Roche Constructors, Inc  
Wells Fargo Foundation

Atmos Energy  
Big R Bridge  
Colorado Premium Foods  
Connecting Point  
Farmers Bank - Ault  
First National Bank  
JBS USA  
Professional Finance Company, Inc  
Vestas Blades America, Inc

# UNITED WAY OF WELD COUNTY

## a FOCUSED WORK IN PROGRESS

In 2005 United Way of Weld County conducted a community needs assessment. From that priority issues were identified and our Community Impact Agenda was developed. This community agenda includes multiple roles for United Way:

- improving the quality of our community
- bringing the entire community together as potential partners
- developing resources
- expecting accountability and focusing on strategies for results

United Way of Weld County knew that it would take a collaborative effort to succeed on our journey to better the lives of the families in our county. Five years later we have made great strides in the areas of early childhood development, positive youth success, strengthening families and adults, assisting people in crisis and access to community resources, because we have worked together.

When we take care of these interrelated concerns, we aspire to everyone in Weld County the skills to reach their highest potential and prosper.

This is a journey we are taking together.

WE ARE CAUGHT IN AN INESCAPABLE  
NETWORK OF MUTUALITY  
TIED IN A SINGLE GARMENT OF DESTINY.  
WHATEVER AFFECTS ONE DIRECTLY  
AFFECTS ALL INDIRECTLY.

-DR. MARTIN LUTHER KING

# OUR MISSION:

TO IMPROVE LIVES BY MOBILIZING THE CARING POWER OF OUR COMMUNITY.

# OUR VALUES:

- ACCOUNTABILITY:** United Way of Weld County is accountable to the community and stakeholders to deliver specific, defined results. We are driven by our commitment to make a real difference in our communities.
- LEADERSHIP:** United Way of Weld County is a leader and catalyst for promoting positive change in our community.
- INCLUSIVENESS:** United Way of Weld County fosters an environment of respect in all interactions and creates a welcoming environment where all feel heard and valued.
- EXCELLENCE:** United Way of Weld County is committed to being a high performance organization, looking for innovation, striving for continuous improvement.
- INTEGRITY:** United Way of Weld County has high standards for its conduct. We are committed to honest, truthful, ethical and transparent engagement.
- COLLABORATION:** United Way of Weld County recognizes our most important resource is people. We work with business, government, nonprofit organizations and the faith community to achieve real results. we recognize that we can achieve more when we work together.

# 2010-11 UNITED WAY OF WELD COUNTY AWARDS

## HUMANITARIAN OF THE YEAR

This award honors those who have rendered outstanding leadership, volunteer service and philanthropic responsibility in our community.

RECIPIENT: PETE AND JEAN MORRELL

## COMMUNITY PARTNER OF THE YEAR

This award honors nonprofit agencies that provide excellent care to the clients in their charge, and whom are also very involved and always supportive of United Way of Weld County and willing to help us meet our missions and goals.

RECIPIENT: CITY OF GREELEY

## VOLUNTEER OF THE YEAR

This award honors a volunteer who has provided extraordinary service over a significant period of time to United Way and the community.

RECIPIENT: GARY BURTON

## NONPROFIT PROFESSIONAL OF THE YEAR

This award honors the dedication of nonprofit professionals in our community. Everyday these nonprofit professionals go above and beyond their job descriptions to help those in need in our community.

RECIPIENT: GWEN SCHOOLEY, A KIDS PLACE

## COMPANY OF THE YEAR

This award honors companies in Weld County for their tremendous support and partnership on many community issues and initiatives.

RECIPIENT: ATMOS ENERGY

## LIVE UNITED AWARD

This award honors volunteers who have gone above and beyond for many years.

RECIPIENT: BILL MAY

a STRONG COMMITMENT  
2010-11 CENTENNIAL CIRCLE award winners

Centennial Circle is United Way of Weld County's highest honor for organizations and Corporations that have demonstrated outstanding leadership and shown their commitment to United Way and our community.

AIMS COMMUNITY COLLEGE  
BANNER HEALTH NORTH COLORADO MEDICAL CENTER  
EHRlich FAMILY OF DEALERSHIPS  
GHENT CHEVROLET AND CADILLAC  
JBS USA  
MONFORT FAMILY FOUNDATION  
NEW WEST BANK  
PROFESSIONAL BACKGROUND INVESTIGATIONS, INC  
SPRADLEY BARR FORD  
STATE FARM INSURANCE COMPANIES  
THE GREELEY TRIBUNE  
WELLS FARGO BANK

# LETTER FROM THE CHAIRMAN OF THE BOARD

Dear Friend,

It has been an honor to serve as Chairman of the Board and to be a part of the many wonderful things being accomplished through United Way. We continue to build a stronger, healthier, more compassionate community by strengthening our partnerships with community leaders, our partner agencies and our generous donors and volunteers.

This year has been very rewarding with the ongoing collaboration between United Way, its partner agencies, and other community organizations. Our evolution as a community leader continues. Though United Way will always be a significant funder of local programs, increasingly we are called upon to join with other leaders to address critical issues facing our community. We remain focused on the work accomplished through our 24 community impact partner agencies. They are absolutely dedicated to providing programs and services to those who need it most.

I want to express my gratitude to the volunteer leadership and generous donors who support United Way of Weld County and our community. Your dedication and contributions allow us to fund programs that provide critical services in our community focused on early childhood, youth success, strong families, a safety net of services and the 211 information and referral program.

Over the years I've seen, first hand, the amazing work donors and volunteers accomplish through United Way, and it gives me great pride to be associated with such an organization. Thank you for allowing me to be a part of it. I look forward to the continued growth of United Way of Weld County.

Together, we will build a strong community.



Dan Dennie,  
2010-11 Chairman  
United Way of Weld County Board of Directors



# 2010-11 UNITED WAY OF WELD COUNTY BOARD OF DIRECTORS

United Way of Weld County is governed by a group of solid community leaders diverse in their talents and backgrounds, but unified in their commitment to a stronger community.

## OFFICERS

**CHAIR, BOARD OF DIRECTORS** Dan Dennie Banner Health/NCMC  
**CHAIR ELECT** Rick Jenkins Flood and Peterson  
**VICE CHAIR** Stow Witwer Witwer Oldenburg Barry & Johnson LLP  
**VICE CHAIR** Jay Hinrichs University of Northern Colorado Athletics  
**VICE CHAIR** Shelley Costigan Sears Real Estate  
**TREASURER** Fred Bauer Farmers Bank – Ault

## MEMBERS

Gary Boehler Carestream Health, Inc.  
Bruce Broderius Greeley-Evans School Board of Directors  
Jim Brock Rickards, Long & Rulon, LLP  
Perry Buck Northern Colorado Event Planning, LLC  
Gary Burton Professional Background Investigation, Inc  
Mike Geile Aims Community College Board Trustee  
Randy Geist JBS USA  
Rebecca Koppes Conway 19th Judicial District  
Dave Long Weld County Commissioner  
Rich Lopez Greeley Printers  
Robert Lowenbach 19th Judicial District – Retired Judge  
Ken Ludwig Aims Community College Student United Way  
Margie Martinez Perusek Weld County Sheriff's Office  
Bill May Rancher  
Roy Otto City of Greeley  
Stephanie Rosenbaum UNC Student United Way  
Doug Round Retired Firefighter  
Amber Sabine Aims Community College Student United Way  
Cathy Schulte Upstate Economic Development Corporation  
Manny Sisneros Alamo Liquors  
Sandy Tomasovich State Farm Insurance Companies  
Mike Trotter Front Range Roofing  
Ted Warner Connecting Point



*Dan Dennie and Rick Jenkins*

WE THANK THEM FOR VOLUNTEERING THEIR TIME,  
CREATIVITY, EXPERTISE, AND ENTHUSIASM.

# GENTLE IN MANNER STRONG IN DEED

## UNITED WAY PROFESSIONAL STAFF

United Way of Weld County's employees are the heart and soul of our organization and our important work. With their ideas and expertise the success of United Way can only grow.

**EXECUTIVE OFFICE** Jeannine Truswell, Executive Director  
Barb Lessman, Executive Assistant

**2-1-1 INFORMATION & REFERRAL PROGRAM** Chris Downen, Director  
Regina Gonzales, 2-1-1 Specialist  
Sandi Meier, Volunteer Center Coordinator  
Karen Sell, 2-1-1 Specialist  
Jo Anne Torkildson, Administrative Assistant  
Wilmerd Velez, Outreach

**FINANCE AND ADMINISTRATION** Diana Vasquez, Director  
Septiari Dirks, Grants Technician  
Ann Esch, Receptionist  
Betsy Ross, Assistant  
Carla Wambolt, Receptionist/Assistant

**MARKETING AND COMMUNICATIONS** Tori Baldwin, Director  
Betsy Ross, Assistant

**PROMISES FOR CHILDREN** Sheila Watson, Director  
Johnnie Alvarez, CHP+ Outreach Specialist  
Janneth Attebery, FFN PASO and CHP+, Coordinator  
Debbie Becker, Child Care Services, Coordinator  
Vanessa Blair, Child Care Referral Specialist  
Jildi Gentry Chacon, Promises for Children, Coordinator  
Caroline Gelatt, Administrative Assistant  
Clara Jones, Bright Beginnings Spanish Program Manager  
Brenda Thomas, Bright Beginnings Program Manager  
Carolina Cervantes, PASO Program TIA

**RESOURCE DEVELOPMENT** Christi Smith, Director  
Sandie Cantrell, Account Manager  
Scott Glaser, Account Manager  
Eva Keaton, Account Manager  
Pat Sullivan, Administrative Assistant  
Beth Pantzer, Campaign VISTA

**RESOURCE INVESTMENT** Susan Van Deren, Director  
Dawn Pace, Administrative Assistant  
Beth Kwast, Building Healthy Marriages, Coordinator  
Erika Rogness, VISTA Coordinator

# THERE IS WORK TO BE DONE

## UNITED WAY VOLUNTEER COMMITTEES

Bringing caring people together is core to United Way's mission. A strong community in which residents are engaged and supportive is needed to make Weld County a better place. Volunteers play a role in solving important community problems and enabling community partners to accomplish more.

### 2-1-1 ADVISORY COMMITTEE

CEO ADVISORY COUNCIL

FINANCE COMMITTEE

### MARKETING AND COMMUNICATIONS

Day of Caring Kickoff Palooza Committee

### RESOURCE DEVELOPMENT

Campaign Cabinet

Campaign Executives

Auction Committee

### RESOURCE INVESTMENT & COMMUNITY IMPACT COMMITTEES

Action Area Investment Panels

Recreation Scholarship Committee

Youth Allocation Committee

Emergency Food and Shelter Program

Housing and Emergency Shelter Network

Champions Committee

### PROMISES FOR CHILDREN

Coordinating Council

Awareness Committee

Community Family Support

Wellness Committee/Project Launch

School Readiness Committee

Home Visitation Committee

Northern Colorado Children's Festival

Child Care Services

- Child Care Services Committee
- Professional Development Committee
- Love to Learn Conference
- Public Relations Committee
- Special Needs Committee

### BRIGHT BEGINNINGS

Bright Beginnings Committee

Public Relations Committee

Packet and Materials Committee

### WELD PROJECT CONNECT STEERING COMMITTEE

THANK YOU THE GENEROUS BEHAVIOR OF VOLUNTEERING IS THE BEAUTY OF GIVING. UNITED WAY APPLAUDS THE VOLUNTEERS WHO SO GENEROUSLY GAVE OF THEMSELVES FROM JULY 2010 THROUGH JUNE 2011.

## a STRONG PARTNERSHIP

# CORNERSTONE PARTNER PROGRAM

Cornerstone Partners are companies and foundations who choose to direct all or a portion of their corporate contribution of \$5,000 or more to cover the cost portion of United Way's administrative and fundraising expenses. Currently, 20 companies have partnered with us to be Cornerstone Partners. These 20 companies underwrite events and certain publications that United Way utilizes to keep you informed. They also ensure that money donated by YOU goes to help people.

United Way does have administrative and fund raising costs. By extensively using volunteers, we are proud to report that our administrative and fundraising cost is 17% and is among the lowest of most major charities and agencies in our community. Each year, Cornerstone partnerships lower this cost.

## 2010-11 CORNERSTONE PARTNERS

Monfort Family Foundation  
NCMC, Inc  
State Farm Insurance Companies  
The Greeley Tribune  
Xcel Energy  
Flood and Peterson  
KUNC Community Radio for Northern Colorado  
Phelps-Tointon, Inc  
QuadGraphics  
Roche Constructors, Inc  
Wells Fargo Foundation  
Atmos Energy  
Big R Bridge  
Colorado Premium Foods  
Farmers Bank - Ault  
First National Bank  
JBS USA  
Professional Finance Company, Inc  
RR Donnelley Norwest, Inc  
Vestas Blades America, Inc

WHEN YOU DONATE TO THE UNITED WAY OF WELD COUNTY COMMUNITY CARE FUND OR TARGETED NEED AREAS, 100% OF YOUR GIFT GOES TO HELP PEOPLE IN OUR COMMUNITY.

# THE UNITED WAY PACESETTERS ESTABLISH THE STRENGTH FOR THE FUTURE AND SET THE STRATEGY FOR GETTING THERE.

Each year these companies and non-profit agencies share a common direction and a sense of community. They can get where they are going, more quickly and easily, because they are travelling on the thrust of one another. Stepping forward to make early commitments to their communities, the following companies and their employees raised a total of \$252,510 to help improve the lives of people right here in Weld County.

## 2010-12 PACESETTER COMPANIES

### PREMIERE PACESETTERS

Ghent Chevrolet & Cadillac  
Weld County Garage  
Cache Bank & Trust  
New West Bank  
Hospice & Palliative Care of Northern Colorado, Inc  
National Board of Chiropractic Examiners  
Anderson & Whitney, PC  
Phelps-Tointon, Inc  
Sears Real Estate

### PACESETTERS

Spradley Barr Ford  
Advantage Bank  
Envision  
North Range Behavioral Health  
Allnutt Funeral Services  
PFC Payment Solutions  
Professional Finance Company, Inc  
Farmers Bank-Ault  
Vestas Blades America, Inc  
Weld County Government

# ADVANCING THE COMMON GOOD THROUGH RELATIONSHIPS

## MAJOR CONTRIBUTORS

Advancing the Common Good is less about helping one person at a time and more about changing systems to help all of us. It's the idea that we are all connected and interdependent; the idea that we all win when a child succeeds in school, when families are financially stable, and people are healthy.

The following companies and their employees, organizations, private foundations and public agencies have invested generously to help create the opportunities for a good life for all, advancing the common good the united way.

|  |   |   |
|--|---|---|
| Monfort Family Foundation                        | Vestas Blades America, Inc                    | Greeley Chamber of Commerce               |
| Americorps                                       | PFC Payment Solutions                         | Allnutt Funeral Services                  |
| State Farm Insurance Companies                   | Wal-Mart Associates                           | Homes & Land Magazine                     |
| Colorado Department of Education                 | Cache Bank & Trust                            | Costco Wholesale                          |
| Colorado Department of Human Services            | Big R Bridge                                  | Agilent Technologies                      |
| Tony Grampus Youth Services Grant                | FirstBank of Northern Colorado                | Robert Shreve Architects & Planners       |
| El Pomar Foundation                              | CenturyLink Employees                         | Dohn Construction, Inc                    |
| US Department of Health and Human Services       | Ehrlich Family of Dealerships                 | Capital Power Corporation                 |
| Hensel Phelps Construction Co                    | Advantage Bank                                | ZLB Plasma Services                       |
| Colorado Health Foundation                       | North Range Behavioral Health                 | Growling Bear Company, Inc                |
| Greeley - Evans School District 6                | Connecting Point                              | Security Service Federal Credit Union     |
| JBS USA, LLC                                     | Aims Community College                        | Upstate Colorado Economic Development     |
| The Greeley Tribune                              | IBM   | Northeast Behavioral Health               |
| Banner Health/North Colorado Medical Center      | Kennedy & Coe, LLC                            | The Group, Inc                            |
| Temple Hoyne Buell Foundation                    | Hewlett Packard                               | Covidien                                  |
| NCMC, INC  | Target #1813                                  | Centennial BOCES                          |
| Xcel Energy                                      | Front Range Roofing Systems                   | Union Pacific Foundation                  |
| Phelps-Tointon, Inc                              | StarTek, Inc                                  | Tri-State Commodities                     |
| Flood and Peterson                               | Noble Energy                                  | First Class Truck and Auto Service        |
| CenturyLink Foundation                           | Noffsinger Manufacturing                      | Guaranty Bank & Trust Holdings, Inc       |
| Weld County Government                           | Colorado Rockies                              | Macy's at Centerra                        |
| Colorado Combined Campaign                       | Evans Management Group, LLP                   | ING                                       |
| Wells Fargo Bank                                 | Colorado Premium Foods                        | Comcast Cable                             |
| Winograd Family Fund at the Community Foundation | Daniels Fund                                  | Highland Early Childhood Education Center |
| Kodak Colorado Division                          | Crop Production Services, Inc                 | Alpine Gardens                            |
| City of Greeley                                  | Poudre Valley Health System                   | Weld County School District RE 9          |
| King Soopers                                     | InfoPrint Solutions Company                   | Metal Container Corp.                     |
| Qualistar  | KUNC Community Radio for Northern Colorado    | KBN Engineers                             |
| Farmers Bank-Ault                                | Weld County School District RE 7              | TSN West, LLC                             |
| Professional Finance Company, Inc                | National Board of Chiropractic Examiners      | FirstBank of Northern Colorado            |
| Combined Federal Campaigns                       | Poudre Valley Rural Electric Association      | Greeley Transitional House                |
| United Parcel Service                            | Honda of Greeley                              | Boy Scouts - Longs Peak Council           |
| Greeley Medical Clinic                           | Meadow Gold Dairy, Inc                        | Porter Industries                         |
| Roche Constructors, Inc                          | Signature Bank                                | Weld County School District RE.1          |
| Anadarko Petroleum                               | Best Buy Co, Inc #1194                        | 2M Printing                               |
| First National Bank                              | High Plains Library District                  | Federal Express                           |
| New West Bank                                    | Cottonwood Travel                             | Texas Roadhouse                           |
| Weld County Garage                               | Caterpillar Inc.                              | University Schools                        |
| Spradley Barr Ford, Lincoln, Mercury, Inc        | Envision                                      | Computer Information Concepts, Inc        |
| Carestream Health, Inc                           | Compass Bank                                  | Meadowlark Optics, Inc                    |
| Borders Books & Music                            | Kenny's Steak House                           | Waste Management of Northern Colorado     |
| RR Donnelley Norwest, Inc                        | UBS Financial Services, Inc.                  | Prairie Grace Church                      |
| Sears Real Estate                                | JC Penney Company                             | Anheuser Busch Company                    |
| Anderson & Whitney, PC                           | Hospice & Palliative Care of No. Co           | CSL Behring                               |
| Pepsi Beverages Company                          | Ball Aerospace & Technologies                 | Nationwide                                |
| Woodward, Inc                                    | Weld County School District RE 4              | Lexmark International, Inc                |
| Atmos Energy                                     | Great Northern Properties, LLLP               | Chase Bank                                |
| Ghent Chevrolet & Cadillac                       | Weld Women's Fund at the Community Foundation | Houtchens, Houtchens & Greenfield, LLC    |
| Quad/Graphics                                    | Valero Services, Inc                          | Norfolk Iron & Metal                      |
| Northern Colorado Paper, Inc                     | CDI Head Start Serving Weld County            | Enterprise Rent A Car                     |

Woody's Newsstand  
Water Valley Land Co  
Thomas & Tyler, LLC  
The Pettit Brothers Band  
T & G Cleaning Service  
Steamway Floor to Ceiling  
Goodwinol Products Corp  
Dixon Agency  
Aaron's Sales & Leasing Ownership  
Texas Industries  
City of Evans  
Copy Right Printing  
Noodle's & Company  
Greeley Area Habitat for Humanity  
Catholic Charities  
US Bank  
ITW National  
Weld County School District RE 8  
McDonald's Restaurants  
Douglass Roofing Co  
Debey's Service  
Anderson Business Resources  
Colorado Community Bank of Greeley  
RVNA  
Weld County School District RE 5J  
Microsoft Matching Gifts  
Aspen Leaf Dentistry  
Greeley Country Club  
Tri-State Generation and Transmission  
City of Fort Lupton  
Weld County School District RE 3J  
Youth & Family Connections  
Tri-Town Lions  
Meals On Wheels  
Town of Windsor  
Horton Feedlots, Inc  
AVAYA Communications  
AT&T Community Giving Program  
ABC Child Development Center  
Syngenta Crop Protection, Inc  
Peterson Energy Management  
Intel  
St Pauls Congregational Church  
Peak Oilfield Service Company  
Professional Background Investigations, Inc  
Northern Colorado Traffic Control  
Nikko Cucina, LLC  
New Force Energy Services, Inc  
John Elway Chrysler Jeep Dodge Ram  
Greeley Interfaith Association, Inc  
YMCA of the Rockies  
O'Reilly Auto Parts  
GreenPath, Inc  
Wellpoint Foundation  
A Kid's Place  
Walgreens  
Wood Group Turbine Control Services  
Town of Milliken  
Weld Schools Credit Union  
Hyland Hills Recreation District  
Fort St Vrain Station  
Eldergarden Adult Day Program  
Monfort/Sunrise Family Health Center  
Hach Company  
Connections for Independent Living  
Weld Food Bank

Ruesch, Biddle & Larson CPA's, LLC  
Lockheed Martin  
Union Colony Preparatory School  
Questar Market Resources  
Key Bank of Colorado  
Alternative Homes For Youth  
City of Fort Collins  
Cornerstone Chiropractic  
Bank of America  
Good Times Restaurant, Inc  
Car Toys  
Child Advocacy Resource & Education  
Leanin' Tree, Inc  
Dairy Specialists  
Bruce J Lichtenberger, CPA  
Bandimere Speedway  
8th Avenue Wing Shack  
Manpower  
Lowe's  
Union Pacific Railroad  
Siebert & Associates, PC  
Atmospheres Salon & Spa  
GE Foundation  
Thunderbird Art Gallery  
Greeley Independence Stampede  
SuperCuts  
Evolution Sign & Design, LLC  
Salud Family Health Centers  
Knowledge Quest Academy  
Whip Mix Corporation  
ProEnergy Controls Solutions  
IDEXX Laboratories  
Hertz Corporation  
Advance Tank & Construction  
A. Bruce Johnson & Associates  
Greeley Board of Realtors  
General Electric  
Weld County Mobile Home Assoc  
Waukee Family Dentistry  
Coren Printing  
Colorado Commodity Traders, Inc  
Admiral Beverage  
Rick's New & Used Furniture  
Colorado Ice Indoor Football  
Kohl's  
Fastframe at St Michaels  
Eaton Country Club  
Kersey Pizza  
Contemporary Studios  
See Life Family Vision Center  
Weld Laboratories, Inc  
Keller Williams Realty of Northern Colo  
Colorado Eagles  
Weld County CAEYC  
North Star Design  
Pelican Lakes  
Anytime Fitness  
Regent Broadcasting  
Marr Family Dentistry, PC  
Embassy Suites Loveland  
Hilton Fort Collins  
Kennedy Dental  
Durango & Silverton Narrow Gauge Railroad  
Weld Family Clinic of Chiropractic  
Pinnacol Assurance  
Good Neighbor Seed & Supply

Greeley Guest House, LLC  
Morning Fresh Farms  
JRL Consulting  
The Rock of Greeley  
Highland Veterinary Clinic  
Craftsman Decorating, Inc  
Weld County Bi-Products  
Tortuga Bay  
American Furniture Warehouse  
Assurant  
The Lodge Casino  
Greeley Philharmonic Guild  
St John's United Church of Christ  
Abbott Laboratories  
P.B. Roche Baseball Training Facility  
Carbon Valley Recreation Center  
Wind Dancer Farm Yoga & Retreat Center  
Curves For Women  
Cigna  
Healthways  
Big O Tires  
Boys & Girls Clubs of Weld County  
Vision Clinic at Foxhill  
Florio's Shoes  
Greeley Ice Haus  
Strohauer Farms  
Shear Vision Studio  
Greeley Hat Works  
Candlelight Dinner Playhouse  
Highland Hills Vet  
Arkansas River Tours  
Country Inn and Suites  
Windsor Auto Repair  
Entanglements Day Spa  
Shadowfax Photography  
Phil's Pro Auto Service  
Marty and Dan's, Inc  
Bratton's Office Equipment, Inc  
Accessories With A Flair!...and Hair  
Showcase Art Center  
Renewable Fiber  
Gray Oil Co.  
Miller's Market and Greenhouse  
Evans Area Chamber of Commerce  
Nu-Way Cleaners, Foothill Cleaners  
Heritage Market  
Contemporary Cook  
Innovative Foods  
Chipotle Mexican Grill  
Harper Feedlots, LLC  
Royal Gorge Bridge & Park  
Heaven's Best Carpet  
Red Robin  
D&D Commodities, Ltd  
Agape Fellowship  
Agrium Advanced Technologies  
Mountain View Bank of Commerce  
Arby's

*Any omissions or errors are simply human error and not a lack of recognition or appreciation!*

## a STRONG VISION FOR THE FUTURE

# INDIVIDUAL LEADERSHIP GIVING AND INVESTORS

United Way of Weld County recognizes the following individuals for their personal contributions. Their generosity is recognized through our Tillers Club Leadership Giving program. Their investment in United Way of Weld County has a significant impact on our ability to improve the lives of people in our community.

## TOCQUEVILLE SOCIETY

\$10,000 +

Kyle Futo  
Mr Kenneth and Dr Cynthia Gryboski  
Richard and Mary Kemme  
Roger and Jamie Lynn Knoph  
Frank and Donna Lakin  
Charlie K. Monfort  
Kaye Monfort  
Myra Monfort  
Dick Monfort  
Tom and Kay Norton  
Tom and Faith Roche  
Mike and Lori Shoop  
Bob and Betty Tointon  
Roy Wardell  
Winograd Family Fund  
at the Community Foundation  
Stow and Maggie Witwer

## TILLERS CLUB LEADERSHIP GIVING PROGRAM

### Harvester

\$5,000 +

Neil Allen  
Steve and Colleen Carrico  
Harold and Carol Evans  
Mike and Penny Gutttersen  
William and Theresa Hertneky  
Drs Kelli and Robert Janata  
Rick and Barb Jenkins  
Dave and Debie Larsen  
Mike and Marilynn Loustalet  
Dr and Mrs Rick Mellin

Tate and John Todd  
Jeff and Anne Wenaas  
2 members wish to remain anonymous

### CULTIVATOR

\$2,000 +

Bill and Dee Allnutt  
Bill and Linda Archibeque  
Larry and Mary Atchison  
Fred and Sherri Bauer  
Gary and Tammy Bauerle  
Dede Bischoff  
Bob and Mary Blattner  
Reva and Dick Bond  
Virginia Boyes  
Holly J Bressler  
Lee and Linda Brooks  
Bob and Nancy Brunner  
Tom and Jana Caldwell  
Doris M Carpenter  
Bob and Marilyn Cash  
Norm and Bonnie Dean  
John and Marie Dollarhide  
Scott and Holly Ehrlich  
Ed and Phyllis Endicott  
Bill and Sharon Farr Fund  
at the Community Foundation  
Fritz and Lynn Fischer  
Herrick and Diane Garnsey  
Bob and Ann Ghent  
Wes and Karen Goehring  
Brent Grauerholz MD  
Richard Halbert MD and Janice Ranson  
Hal and Mary Hall  
Harold and Judy Harper  
Paul and Jenna Hiratzka  
Jean A Hoshiko  
Dr and Mrs Robert Hummel  
Paul Hurst and Patty Mayer  
Leonard and Jackie Huskey  
Don and Lynn Janklow  
Bob and Sallie Johnson

Emily and Doug Kemme  
Larry Kimble  
Dr Roger Klingenberg and Dr Elaine Foe  
Rok and Judy Kron  
Toby and Nancy Layden  
Dr Charles and Cathy Lehman  
Jerry and Pam Lewis  
Jim and Janet Listen  
Royal and Angela Lovell  
Tony and Stephanie McCune  
Randy and Beth McGinnis  
Cecil and Joanne McPherron  
Del and Marlene Miles  
Chris Moore and Ann Little  
Mark and Jan Notestine  
Frank G and Betty Ottesen  
Peetz Family  
Gery Platz  
Steve and Mindy Rickard  
Joyce and Joel Rothman  
Mike and Mendy Rushing  
Bob and Lydia Ruyle  
Christopher and Suzanne  
Schmachtenberger  
Roch and Teresa Schmitz  
Ken and Pat Schultz  
Diane Sears  
Mr and Mrs Masoud Shirazi  
Kevin and Alma Shironaka  
Bob and Marietta Shreve  
Joe and Barb Slobojan  
George and Georgia Sluyter  
Carroll and Jean SoRelle  
Chalice Springfield and Chris Downen  
Mike and Ann Stewart  
Michael and Linda Stone  
Wes and Jennifer Tabor  
Verniece Thomas  
Tom and Jo Anne Torkildson  
Kim and Eric Wallin  
Don and Shirley Warden  
Jerry and Nancy Weil  
Rich and Marion Weiss  
Dan and Sharon Wheeler

Margie and Willy Wiedeman  
Warren and Julie Yoder  
Mary and Dave Young  
*10 members wish to remain anonymous*

## PLANTER

\$1,000 +

Dr John and Jane Adams  
Jason and Christy Aldridge  
Curtis and Diane Alexander  
Mr and Mrs James G Alles  
Paul and Karen Andre  
Richard and Lisa Arata  
Phyllis and Hugh Arnold  
Goldie Augustmoon  
Jamie E and Sarah M Baessler  
Ted Baessler  
Steve and Teresa Baker  
David and Sherry Balliet  
Tom and Kim Barbour  
Jim and Peggy Barnett  
John and Aileen Barry  
Lefty and Nancy Bartels  
Byron and Chris Bateman  
Bob Benke DDS  
Sidney J Benner DDS PC  
Ed and Jennifer Bick  
Andy and Jill Bland  
Dick and Irene Boettcher  
Larry and Karen Bohlender  
Marcia and Bill Bohnenblust  
Mike and Judy Bond  
John and Karla Bowness  
Micheal and Patricia Breien  
Jim and Dorothy Brock  
Ken and Perry Buck  
Gary and Liz Burton  
Randy and Carol Bussey  
Dale and Julie Butcher  
Vic and Sharon Campbell  
Doug and Rhonda Campbell  
Pat and Sandie Cantrell  
Dr Dana Christiansen  
Dr and Mrs Ronald Clark  
Royce Clark  
Karen and Scott Clugston  
Craig and Denise Colberg  
Paul and Jean Conklin  
Shelley Costigan  
Bill and Bonnie Cox

The Croot Family  
Don and Dorothy Cummins  
Dan and Cyndi Dennie  
Roxanne Dixon of the Dixon Agency  
John and Mimi Dong  
Richard and Kay Drake  
Kay and William Duff  
Brad and Amanda Dunbar  
Bill and Debbi Eastwood  
Dr Burdett and Rebecca Edgren  
Bill and Dorothy Elder  
David and Cecilia Everson  
Bob Farmer  
Carolyn D Figal  
Peggy Ford Waldo  
Patty Swanson and Mike Frick  
Helen and Mike Geile  
Randy and Penni Geist  
Travis and Jennifer Gillmore  
Tom and Carol Gipson  
Tom and Nona Gordon  
Roger and Sylvia Greenberg  
Julianne F Haefeli  
Brooke Hale  
Dale and Susie Hall  
Dan and Becky Halstrom  
Laurie Hamit  
Maddie and Ron Heil  
K K Heupel  
Glenn and Lee Hewitt  
Bob and Laura Hinderaker  
Betsy D Holder  
Ed and Renee Holloway  
Alan and Diane Holmberg  
Scott and Marian Hooks  
Ellis Hopkins  
Tim Hutchison and Jane Rozum  
Joy L Jackson  
Don and Connie Jetter  
Diane and Jim Jokerst  
Loretta Jones  
Steve and Sue Kading  
Bob and Monica Kahn  
Dr and Mrs Kenneth Kaplan  
Mike and Nomie Ketterling  
Bernie and Ginny Kinnick  
Ray and Judy Knapp  
Paul and Dena Knapp  
Bill and Jean Koch  
Lee and Karen Korins  
John Kosmicki  
Ralph and Jolene Kreitler  
Ron and Donnie Lambden

Dr Ranelle Lang  
Leroy and Janice Leavitt  
Sam and Nona Leeper  
Dr Marsi Liddell and Dr Tim Fleming  
Bob and Barb Lowenbach  
Pamela Luster  
David and Bonnie Martin  
Bill and Holly May  
Gary and Sharon McCabe  
Dr Janis McCall  
Ron and Kate McNeill  
Larry and Bobbie Menefee  
Robert and Mary Merz  
Flo Mikkelson  
Walker and Susanne Miller  
Caroline and John Mills  
Robbie and Brook Miner  
Warren and JoAnn Mitchell  
Jean and Pete Morrell  
Diane Murata and Michael Muskin  
Kenton and Susan Nicholas  
Mike and Kelly Nichols  
Mike and Betty Nixon  
Norm and Marty Noe  
Norgren Family  
Ty and Katy Notestine  
John C Okada  
Beth and Bill Oligmueller  
Peggy and Dick Osborne  
Gene and Jean Overturf  
Ralph T and Mary C Pagano  
Kaya and Larry Pederson  
Jay and Joy Pickar  
Fred and Pat Puckett  
Kevin and Elaine Quam  
Rich and Carol Quinn  
Goodwinol Products Corp  
Richard and Verna Recor  
Ron and Kathy Rees  
Nicole L Reeves  
Rick and Nina Rentschler  
Walt and Judy Richter  
Roy Rodriquez  
Gale Saddler and Carol Dierks  
Roger DeWitt and Rebecca Safarik  
Ken and Amy Salazar  
Jan and John Saurer  
Mike and Georgia Savage  
Cynthia Schafer  
Brian K Schmalhorst MD  
Doug and Jody Schult  
Cathy and Dennis Schulte  
John Schulte

## sower

\$750 +

Vicki Sears  
David and Claudia Seaver  
Lloyd and Zola Seekamp  
Jim and Pam Shaddock  
Gerald and Jeannine Shadwick  
Julie Sharp  
Shell Duggan Perl Group  
of Morgan Stanley Smith Barney  
Grant and Wendy Shupe  
Gregg and Cindi Shupe  
Jason and Marinda Simpson  
Manny and Bonnie Sisneros  
Dr and Mrs Howard Skinner  
Mr and Mrs Patrick Smith  
Ray and Mary Sorensen  
Ken and Meggan Sponsler  
John and Linda Springer  
Ray Storck  
Pat and Dorothy Sullivan  
In Loving Memory of Michael Swift  
Robert and Diane Tateyama  
Steve and Nancy Teksten  
Don and Mary Tennesen  
Tim and Kim Thomas  
The Todd Family  
Tim and Sandy Tomasovich  
Stephen Tracy  
Mr and Mrs Bill Trupkiewicz  
David and Micke Trussell  
Robert and Jeannine Truswell  
Tim Uber  
Douglas and Dorothy Uyemura  
Dave and Barb Vance  
Carol Vanetti and Jerry Wones  
Jim and Michele Vetting  
Larry and Sharron Vosmera  
Adolf and LoRita Wachsmann  
Jeff and Julia Wald  
Lynn and Robert Waltman  
Tim and Sally Warde  
Steve Weaver and Holly Bea-Weaver  
Bruce and Laura White  
Bill and Marylouise Widmaier  
Ron Wildeman  
Andrea and Eric Wilson  
Don and Karen Wittnam  
Karen and Larry Wood  
Tammy Yeager  
Steve and Sue Young  
Terry and Cathy Zubler

*56 members wish to remain anonymous*

Eric and Heidi Aas  
Mr and Mrs William Ankeny  
Kenny Arnold  
David and Michaelen Bagley  
Stan and Maggi Basinger  
Adele and Bob Benter  
Joyce and Neil Best  
Dottie Bolinger  
In Honor of Tom Boyle  
Ed and Nancy Brigden  
Bruce and Kay Broderius  
Bryan and Beth Butcher and Family  
Mike and Joanie Butler  
Eric and Lisa Cahoy  
Natalie M Chacon  
John and Sharon Clinebell  
John and Margaret Coleman  
Sean Conway and Rebecca Koppes Conway  
Mark A Cook  
Dale and Nina Cook  
Nancy and Thomas D'Albergaria  
Dave and Jean Daviet  
Charles and Fran Eaton  
Michael J and Suzanne Engrav  
F Ellen Foster  
Dr and Mrs Arnold Foulk Jr  
Ed Breay and Elizabeth Funk-Breay  
Chris Gertz  
Tammy J Girten  
Dave and Pat Grauberger  
John and Michelle Guerin  
Enrique and Erica Gutierrez  
Rick and Brenda Haines  
Bill and Diana Hall  
Jodi Hartmann  
Richard and Kristi Helzer  
Doug and Linda Henry  
Dick and Linda Hillman  
Don and Mary Hoff  
Kevin Holt  
Terry and Renee Jaccaud  
Chris and Karen Jeavons  
Roger and Jackie Johnson  
Diana Krausnick  
Bill and Polly Kurtz  
Brad and Denise Leafgren  
John and Yvonne Logue  
An and Joe Luethmers  
Sarah MacQuiddy & WJ Rusty Mellon

Cary Maes  
Ernie and Jean Martin  
Gary and May Hendershot  
Dr Patricia Matijevic  
Bob and Debby Mauck  
Dale and Iva Robins  
Alan and Denise Miller  
Don and JoAnn Mueller  
Vic and Edye Nottingham  
Greg and Kathy Obermann Family Fund  
at the Community Foundation  
Mary E O'Neal The Group Inc  
Dr Marilyn J Orth and John Orth  
Fred and Roxanne (Soltz) Otis  
Roy and Sally Otto  
George and Darlene Price  
Les and Sandy Race  
Shelly Rager  
Dorothy Reichert  
Mr and Mrs Kent Reitz  
Robert and Robyn Rodd  
Ed and Thalia Roebuck  
Linda and Jack Schreiber  
Tom and Sandi Selders  
Sitton Family  
Mr and Mrs William Smythe  
Jack and Rose Stoller  
Kevin and Betty Strobel  
Joan and Joe Tennesen  
Michael C Wagner  
Jerry and Lynette Wassemler  
Betty Whitson  
Stu and Ruth Wright  
*44 members wish to remain anonymous*

*Any omissions or errors are simply  
human error and not a lack of  
recognition or appreciation!*

# a STRONG START

## POSITIVE early CHILDHOOD DEVELOPMENT

### PROMISES FOR CHILDREN: PRENATAL CARE, PARENT SUPPORT, SCHOOL READINESS, & CHILD CARE SERVICES

The early years in a child's life lays the foundation for future life success. Eighty-five percent of the human brain is formed by three years of age. Many of Weld County's children do not get a good start in life. Prenatal health, access to health care, positive brain development, quality early childhood education, parent education/support and training are essential to help ensure all children have opportunities to develop school readiness skills in order to prevent the achievement gap that can begin in kindergarten.

### FUNDING AND SUPPORT PROVIDED TO:

Best Start for Babies

Bright Beginnings

Home Visitation Programs

Child Care Services

Child Care Quality Improvement Grants

Child Care Referral Services

Financial Assistance Program

Mentoring and Training

Envision

Early Intervention

Highland Early Childhood Education Center

School Readiness, Field Trips

Northern Colorado Children's Festival

Promises for Children

Born Learning Trails, Community Awareness & Education-(Prenatal, School Readiness), Community Baby Showers,

Family Literacy Carnivals, Health Initiatives, Low Cost Health Insurance Assistance (CHP+), PASO Program,

Parent Education Symposiums, Raising a Reader Program

Weld County Department of Public Health & Environment

Prenatal Outreach Coordinator

Weld Early Childhood Intervention Partnership

Multiple Agency Collaboration: Child Advocacy Referral & Education, Family CONNECTS, First Steps, North Range Behavioral Health



**2010-11 RESULTS:** Your United Way in action with school readiness, quality childcare, prenatal care and parent support/education:

#### BEST START FOR BABIES

Thanks to a grant from the El Pomar Foundation North Regional Council the Best Start for Babies program was developed to administer an intensive parent education program for at-risk families in both Weld and Larimer Counties.

- 40 families (64 parents total) graduated from the 10 week Best Start for Babies program where they received essential information.

#### BRIGHT BEGINNINGS

This program helps parents as they begin and continue their parenting journey to be better equipped to facilitate their child's language, social/emotional and school readiness skills.

- 1025 children received a United Way Bright Beginnings visit. These visits provide parenting education, tools, support and information on positive early childhood development and community resources.
- 18 new Bright Beginnings volunteers were trained to provide home visits for new parents. A new partnership with JBS USA generated 15 JBS employees becoming trained Bright Beginning volunteers.
- In-kind donations valued at \$20,328 made it possible for United Way's Bright Beginnings program to distribute: 108 car seats; 10 strollers w/ infant car seat; 1 crib; 224 packages of diapers; 83 packs of baby wipes, 12 cans of formula; 232 baby outfits and 36 assorted toiletry items to parents in need. These items were made available through the visitation service.
- 10 University of Northern Colorado nursing students completed Bright Beginnings training during their 9 week internships.
- 18 teachers from Latin America countries in the Scholarships for Education and Economic Development (SEED) program at the

University of Northern Colorado volunteered for the Bright Beginnings program at United Way.

## CHILD CARE SERVICES

- 840 parents/guardians were connected to United Way's Child Care Resource and Referral program through personal contact by telephone or online service.
- 326 Child Care Providers attended professional development training throughout the year. These trainings were designed to increase knowledge and skill level of best practices in early childhood development and education.
- 490 child care professionals attended the 5th annual United Way Love to Learn Conference. This one day event attracts attention from all areas of the state.

## CHILDREN'S FESTIVAL

Over 5,000 children and their families attend the United Way of Weld County Children's Festival at the Island Grove Regional Park Event Center. 95 vendors participated in the April event. The most popular included a petting zoo hosted by the FFA Chapter at Greeley West High School and the book give away sponsored by Border's Bookstore customers – each child in attendance was able to choose an age appropriate book with guidance of their parents.

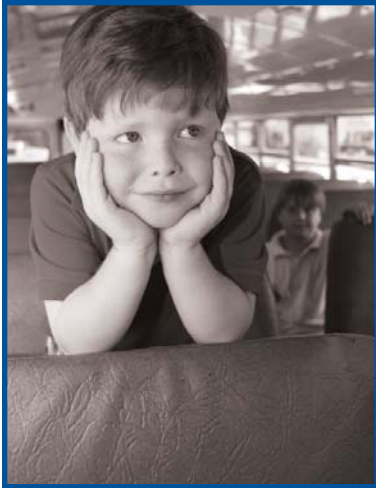
## COLORADO HEALTH PLAN PLUS (CHP+)

- 219 individuals were enrolled into CHP+/Medicaid programs through United Way of Weld County
- United Way of Weld County became a state certified Presumptive Eligibility site for the CHP+ program.
- United Way's CHP+ outreach staff attended nearly 60 events throughout Weld County to deliver awareness and enrollment services.
- CHP+ marketing campaign included 40,000 flyers (English and Spanish) distributed to each child, preschool through high school, in all Weld County school districts; outdoor media (billboard and bus bench placement) and radio advertising.

## FAMILY, FRIEND & NEIGHBOR-PROVIDERS ADVANCING SCHOOL OUTCOMES (FFN-PASO)

- 15 of United Way's PASO child care providers completed 20 months of training (30 sessions totaling 100 hours of curriculum and 75 hours of home visits). These child care providers delivered quality child care and positive school readiness skills to 68 children.
- 15 parents attended parenting classes through the United Way of Weld County PASO program; LOS PADRES for the fathers and LAS MADRES for the mothers.

## FAMILY LITERACY CARNIVAL (FLC)



- 4 United Way Family Literacy Carnivals were held throughout Weld County:
- 234 attend the Weld County School District 6 Preschool Program FLC
- 196 attended the Johnstown/Milliken Early Childhood FLC
- 691 attended the Centennial Elementary/Dos Rios Elementary FLC, generously sponsored by JBS USA. 40 JBS employees served as event volunteers.
- 40 families attended the Centennial BOCES Summer Migrant program FLC

## PARENT EDUCATION SYMPOSIUM

- 5 Parent Education Symposiums were held throughout Weld County in Fort Lupton, Greeley, Hudson, Milliken and Windsor. Programs concentrated on *The Importance of Early Reading Skills and Parenting the Super Nanny Way*. A total of 227 parents and 231 children attended.

## PRENATAL PROGRAM

- 966 women received prenatal counseling and resources to promote optimum health through their pregnancy and delivery of their baby

## PROMISES FOR CHILDREN AUCTION

Over 300 guests, volunteers and staff attended the United Way of Weld County Grand Ole Auction in April 2010. The auction raised \$21,693 to benefit United Way's Promises for Children program.

## RAISING A READER

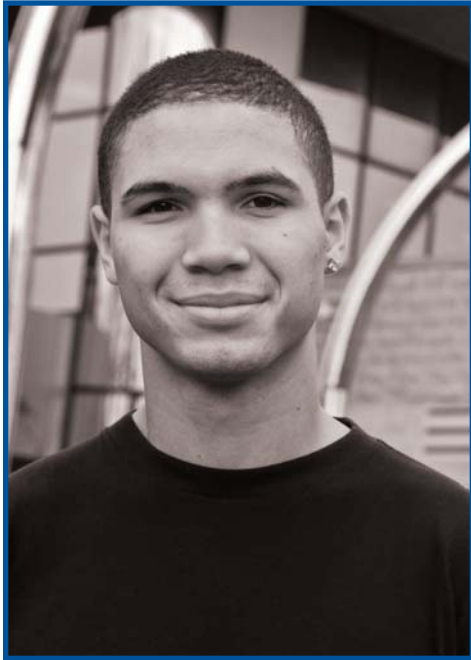
- 3 child care centers, 7 home care providers, and 300 children participated in the book bag rotation program through United Way's Raising a Reader strategy.

United Way believes that early child education is critical. Our work continues to build strong relationships between child care providers, elementary schools and parents to ensure children have a positive and happy experience when they start kindergarten. We are making information available to parents regarding community resources which will help their children have the best start in life and reach their full potential. There will be an increase in community awareness about the importance of prenatal health and its correlation to brain development. It is, after all, where it all begins.

## STRONG TO THE FINISH

# KEEPING YOUTH ON TRACK, SUPPORTING INCREASED GRADUATION RATES

Staying in school and graduating is an essential step to help assure a young person's ability to be a contributing member of our community. Youth who participate in quality before/after school programs, have positive role models in their lives and encouraging parental support have a better chance of graduating from high school. United Way of Weld County is working to ensure Weld County's young people have opportunities for programs and services that keep them on a positive track to life-long success.



### FUNDING AND SUPPORT PROVIDED TO:

Boy Scouts of America, Longs Peak Council  
Comprehensive Youth Development, Scoutreach, Equipment, Staff Training, Youth Committee Program

Boys and Girls Clubs of Weld County  
Educational Enhancement Program, Performing & Visual Arts Program, Youth Committee Program, VISTA Project

Frontier Academy  
Positive School Climate

Girl Scouts of Colorado  
VISTA Project

Greeley-Evans Weld County School District 6  
VISTA Project

North Range Behavioral Health  
At-Risk Youth School Program, Youth Committee Grant-School Program

Recreation Scholarships at:  
Carbon Valley Recreation Center, City of Evans Parks & Recreation, City of Greeley, Leisure Services Department, Fort Lupton Parks & Recreation, Highland Recreation Association, Thompson Rivers Parks & Recreation, Town of Eaton Recreation Department, Town of Kersey, Town of LaSalle Recreation Department, Town of Mead Recreation Department, Town of Platteville Recreation Department, Town of Windsor Recreation Department

Retired and Senior Volunteer Program  
America Reads Tutoring Program

School Supply Drive

Turning Point  
Day Treatment Center

Weld County School District RE-9  
VISTA Project

Youth and Family Connections  
Truancy Intervention Program, VISTA Project

YMCA, Frederick After School Program

**2010-11 RESULTS:** Your United Way in action with keeping youth on track and supporting increased graduation rates.

#### BOYS AND GIRLS CLUB

- Over half of the youth survey showed an increase in positive attitudes and behaviors toward their academic studies. 601 youth participated in the Homework Assistance program.

#### NORTH RANGE BEHAVIORAL HEALTH

- 93% of the students with suspension issues have increased their attendance by 80%
- 90 clients have been served by clinicians in the school based setting.

#### YOUTH AND FAMILY CONNECTIONS

- 87% of the 403 participants in this program have advanced to the next grade level, graduated from high school or completed a GED/alternative education program

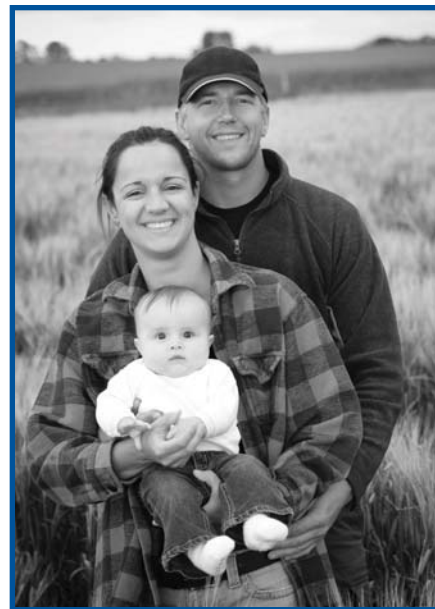
United Way believes all children should receive a quality education and graduate from High School prepared for college and the workforce. We continue to collaborate with other organizations from the private, government and nonprofit sectors to expand opportunities for high quality Before/After School programs. We are supporting programs that ensure more young people are developing the necessary skills to be fully prepared to enter college, the workforce and successful adulthood.

# a STRONG HOME TO STABILIZE AND STRENGTHEN FAMILIES AND ADULTS

A strong home starts with financial stability. United Way of Weld County strengthens our communities by identifying and tackling the underlying causes of the most serious social issues facing our local residents. One of the most critical is the financial instability of low-to-moderate income families.

## FUNDING AND SUPPORT PROVIDED TO:

Building Healthy Marriages  
Catholic Charities  
Champions Program  
Connections for Independent Living  
Champions Program  
Consumer Credit Counseling of Northern Colorado (Now known as Green Path)  
Champions Program  
Greeley Area Habitat for Humanity  
VISTA Project  
Greeley Transitional House  
Champions Program  
High Plains Library District  
VISTA Project



**2010-11 RESULTS:** Your United Way in action with self-sufficiency and financial stability for families and adults:

**BUILDING HEALTHY MARRIAGES** 973 couples participated in the Building Healthy Marriages program to acquire the skills and knowledge necessary to form and sustain a healthy relationship.

**CHAMPIONS PROGRAM** Connecting those in need with the knowledge and services they require to succeed will change the future of generations to come. The United Way Champions program helps people improve their financial stability and open doors to a future of possibilities as they navigate their way to self-reliance. The primary goal of the Champions program is to provide a network of support to individuals and families so they can achieve a new level of stability, self-sufficiency and ultimately, are able to remove themselves from agency and system supports. The agencies in Weld County participating in the Champions program are Catholic Charities, Connections for Independent Living, Greeley Transitional House and Green Path (formerly Consumer Credit Counseling).

- 165 households were served by the Champions program. A high percentage of clients in the program for 6 months or longer made progress towards self-sufficiency:
  - Catholic Charities - 96%
  - Connections for Independent Living - 85%
  - Greeley Transitional House - 100%
  - Green Path reports that 87.5% of clients remaining in the Champions Program moved at least one step forward in the Spending Plan domain area on the Champions Self Sufficiency Matrix. All participants in the workshops reported they have an improved understanding of their financial decision making options and techniques.

**FAMILYWIZE** United Way became a partner with the FamilyWize program in March 2007. This free service reduces the cost of medicine for children, families and individuals with no prescription drug coverage. It is a simple program that is helping thousands. PARTNER STATISTICS FROM MARCH 2007-JUNE 2011

- 23,836 claims have been filed by Weld County residents.
- Weld County residents have saved over \$424,147 in prescription costs. An average savings per claim reported is \$16.79 (35%) That's real money that they can be spent on other important necessities.

**BUS TOKENS** Thanks to a partnership with the City of Greeley 21,146 bus tokens were distributed to nonprofit agencies, faith based organizations, and government programs to help low income clients with transportation. The tokens are used for for getting to work, school, and to appointments

United Way believes all families should have access to employment and economic opportunities needed to provide a future of financial stability. We are working to include additional collaboration with organizations to develop follow-up programs helping families stay on a positive path toward self-sufficiency. We continue to develop strategies to promote successful life skill programs that will help families and adults adopt a sense of personal responsibility.

# a STRONG HAND-UP

## ASSISTING PEOPLE THROUGH CRISIS AND BASIC NEED SERVICES

Challenges that are impossible to manage on one's own can suddenly happen in anyone's life. Severe illness, an accident, loss of employment any number of misfortunes can leave people in need of a helping hand through times of crisis. And none of us are completely immune to unfortunate life developments.

A safety net of health and human care services are critical in our community to respond to the needs of vulnerable populations. Essential services such as food, shelter, clothing, health care, transportation and support for victims of domestic violence, child abuse and crimes are necessary. Some folks, the elderly, disabled and challenged, often just need a helping hand.



### FUNDING AND SUPPORT PROVIDED TO:

#### A Kid's Place

Court Appointed Special Advocates  
VISTA Project

#### A Woman's Place

Shelter and Legal Advocacy

#### American Red Cross

Disaster Assistance and Response

#### Catholic Charities

Emergency Assistance, Guadalupe Shelter, Senior Services

#### Child Advocacy Resource and Education (c.a.r.e.)

Supervised Visitation, Parenting Class Program, Anger Management Program,  
Safe Touch Program

#### Connections for Independent Living

Housing Program, MS Living Services, VISTA Project

#### Consumer Credit Counseling Service of Northern Colorado

(Now known as Green Path) Financial Counseling

#### Eldergarden Adult Day Care Program

Adult Day Care Services

#### Emergency Food and Shelter Program (EFSP)

Multiple Agencies to help meet the needs of hungry and homeless people: A Woman's Place, Catholic Charities, Connections for Independent Living, Ft Lupton Food Bank, Greeley Transitional House, Room at the Inn, Salvation Army, Stepping Stones of Windsor, United Way of Weld County and Weld Food Bank

#### Envision

Respite Care Families

#### Greeley Transitional House

Emergency Shelter/Follow-Up Management, VISTA Project

#### Meals on Wheels

Home Delivered Meals

#### Med-Aid Prescription Assistance Program

#### Monfort Family Clinic

VISTA Project

#### North Range Behavioral Health

Acute Treatment Unit, VISTA Project

#### Rehabilitation and Visiting Nurse Association Home Care Services (RVNA)

Home Health Care

#### Retired Senior Volunteer Program (RSVP)

South Weld Program

#### Weld Food Bank

Emergency Food Box Program, Kid's Café



**2010-11 RESULTS:** Your United Way in action with assisting people through crisis and basic need services:

### A WOMAN'S PLACE

- 92% of women and families that received emergency shelter services reported feeling safer in their daily lives after receiving assistance.

### CATHOLIC CHARITIES-GUADALUPE SHELTER

- People staying at the shelter have a safe place to sleep and get a hot meal. Those who accept case management have an increased knowledge of resources and will be better able to obtain housing and employment.
- Of the 47% of adults who received case management 34% exited with sustainable housing and 57% exited with employment.

### CHILD ADVOCACY RESOURCE & EDUCATION -SAFE TOUCH

- 80% of the students who participated in a Safe Touch presentation reported an increased knowledge and skills to recognize, resist and report abusive situations

### CONNECTIONS FOR INDEPENDENT LIVING

- In seeking affordable housing 64% of people with disabilities have been successful
- 98.6% of people in the Multiple Sclerosis program have remained living independently and avoided nursing home placement

### GREELEY TRANSITIONAL HOUSE

- A total of 10,885 individual nights of shelter were provided to all new and continuing families. Meetings with case managers to set goals, Life skills classes, and referrals and information to community resources are provided. 1,420 hours of case management was provided for families in the program.

### MEALS ON WHEELS

- 54,484 well balanced, nutritionist monitored meals have been served to people in Weld County. Clients have seen an improvement in their physical and mental health through the volunteer meal delivery and wellness check.

### WELD FOOD BANK

- Over 9,000 households received a nutritious Emergency Food Box, thereby increasing their ability to function in their daily lives.



United Way believes in engaging Weld County residents to strengthen the essential building blocks for a healthy community. We continue to work with organizations throughout Weld County to help our most vulnerable residents become stable and self-sufficient. We are building relationships with Weld County providers of programs and services that are able to meet the needs of as many people in crisis as possible.

# a STRONG LINK access TO COMMUNITY resources

A kind voice says... "United Way 2-1-1, how may I help you?" There are thousands of people in Weld County who are hungry, homeless or at risk for being so. There are women and children who have been abused. There are people who struggle with disabilities. Everyday someone new calls 2-1-1 for understanding, compassion and help. People need answers when facing personal crisis. United Way can help Weld County residents with their non-emergency requests. And during times of disaster volunteers and donors can be directed by calling 2-1-1 enabling first responders and professionals to do what they do best. The hardships that come in life can become easier by dialing 2-1-1 or searching online at [www.unitedway-weld.org](http://www.unitedway-weld.org). The 2-1-1 Information and Referral program is free, confidential, bilingual and available 24/7 for any Weld County individual or professional seeking help for a client.

The Volunteer Center links people who want to offer assistance through the utilization of specific volunteer software. The Volunteer Center is able to respond to agency needs by connecting them to available volunteers.

## FUNDING AND SUPPORT PROVIDED TO:

United Way of Weld County 2-1-1  
Information and Referral Program  
Volunteer Resource Center



**2010-11 RESULTS:** Your United Way in action providing the community with resources and volunteer opportunities:

### 2-1-1 INFORMATION AND REFERRAL PROGRAM

- Increased quality and customer service of critical information and timely referrals to people in crisis
- 19,608 calls were handled, an average of 1,634 client calls per month. Client referrals were made from over 2,203 community resources and offered over 7,000 successful referrals
- Average length of call per client was 3 minutes and 39 seconds.
- Average time clients are on hold before connected to a 2-1-1 staff member is 20.9 seconds.
- Annual caller abandonment rate is 18.1%. This statistic measures the percentage of calls that are answered by 2-1-1 staff. The goal is to be under 20%.
- Client satisfaction as measured by follow-up quality control calls through a random survey with 1 being low quality service and 5 being the highest quality of service. 2010-11 average of 4.7
- The 2-1-1 program has averaged a client satisfaction rating of 4.7 out of 5 from July 2010 to June 2011.
- Enhancement of outreach programs for those in need of health and human services
- Significant expansion in South Weld County of 2-1-1 services and partnerships.

### VOLUNTEER RESOURCE CENTER

- A successful Day of Caring engaged 147 volunteers. The day of volunteer activity generated 588 volunteer hours, valued at \$12,560.

United Way believes helping people access information and services is an important and critical step to realizing hope with life experiences.

# FINANCIAL STATEMENT AUDITED 2010-11

## REVENUE

|                            |                     |
|----------------------------|---------------------|
| Campaign Contributions     | \$ 2,767,435        |
| Grants & Contracts         | \$ 1,264,525        |
| Investments Income         | \$ 27,705           |
| Miscellaneous Revenue      | \$ 46,395           |
| (Designated Contributions) | \$ (462,944)        |
| (Uncollectible Campaign)   | \$ (102,361)        |
| <b>TOTAL</b>               | <b>\$ 3,540,755</b> |

## LEVERAGED DOLLARS

|  |                   |
|--|-------------------|
| Funds leveraged by United Way in direct support of initiatives and/or other related work in Weld County. | <b>\$ 375,000</b> |
|--|-------------------|

## EXPENSES

|                                     |                     |
|-------------------------------------|---------------------|
| Community Services & Grantee Awards | \$ 2,963,080        |
| Administrative & Fundraising        | \$ 610,089          |
| <b>TOTAL</b>                        | <b>\$ 3,573,169</b> |

Visit [www.unitedway-weld.org](http://www.unitedway-weld.org) to access detailed information

United Way of Weld County is audited  
by the firm of Anderson & Whitney PC  
Certified Public Accountants Greeley, Colorado  
A copy of the complete audit is available on request.

# BUILDING a SHARED VISION FOR CHANGE

United Way of Weld County would like to thank YOU for partnering with us to exceed our goals and help build a better, stronger community. Because of your generosity and exceptional commitment we were able to change the lives of those people who need it most.

## CHANGE DOES NOT COME EASILY

Today, United Way's focus is to make a difference in the lives of children, our young people, families and folks in crisis. We strive to make sure children start school ready to learn they stay in school and graduate, families are safe and self-sufficient and basic needs are met for our most vulnerable population. Thanks to your help, we are achieving visible, long-term results for people in Weld County.

We are able to accomplish our results by bringing people together. To help with our community's most critical social issues we include experts, business leaders, donors, local nonprofit and government agencies. In forming these partnerships we are better able to address the underlying causes of problems in our community and prevent them from happening in the first place.

We invest in nonprofit partners throughout the community who also value and encourage collaboration and produce measurable results. United Way is focused on achieving real results through the implementation of strategies that work. This is the very essence of community impact and United Way will continue to build on our LIVE UNITED efforts. Our focus on children, families and community is improving lives and creating a better community for all of us.

We all recognize the real magic and power of United Way of Weld County is our extraordinary volunteers. I thank and commend each of you who are committing your time and talents to this community.

Thank you for the lasting changes you are helping make in Weld County. With your continued support, we will create positive ripples of change throughout our community.

In grateful appreciation,



Jeannine Truswell, Executive Director  
United Way of Weld County



**LIVE UNITED**

**UNITED Way**

OF WELD COUNTY  
**IS a FORCE.**

IT IS NOT a RESULT;  
**IT IS a CAUSE.**

IT IS NOT a PRODUCT;  
**IT PRODUCES.**

IT IS a POWER-  
**a POWER**

**FOR GOOD.**

814 9TH STREET, GREELEY, CO | [WWW.UNITEDWAY-WELD.ORG](http://WWW.UNITEDWAY-WELD.ORG) | 970.353.4300

